

# LaLamour

Summer 2022





LASU 2212  
LASU 2213  
LASU 2200

LASU 2260





LASU 2262

LASU 2214





LASU 2231  
LASU 2266

LASU 2211





LASU 2231  
LASU 2265

LASU 2210





LASU 2264





LASU 2261

LASU 2260





LASU 2261

LASU 2263  
LASU 2200













LASU 2271

LASU 2281









LASU 2270

LASU 2234

LASU 2232  
LASU 2274

LASU 2272

LASU 2280  
LASU 2200





LASU 2232  
LASU 2274











LASU 2234

LASU 2254  
LASU 2200





LASU 2283



LASU 2264





LASU 2251

LASU 2254  
LASU 2235







LASU 2251





LASU 2264





LASU 2283





LASU 2232  
LASU 2285

LASU 2280  
LASU 2200



LASU 2223  
LASU 2235

LASU 2223  
LASU 2200

LASU 2221





LASU 2220

LASU 2225





LASU 2223  
LASU 2235









LASU 2223  
LASU 2200





LASU 2220





LASU 2242  
LASU 2235

LASU 2231  
LASU 2245

LASU 2243  
LASU 2244





LASU 2241

LASU 2234





LASU 2231  
LASU 2224

LASU 2234

LASU 2225

LASU 2234





LASU 2234

LASU 2231  
LASU 2224





LASU 2255





LASU 2250





LASU 2255





LASU 2252













LASU 2250





LASU 2250







**GARDEN**  
95% MICRO MODAL / 5% EA



LASU 2210



LASU 2211



LASU 2212



LASU 2214



LASU 2213







**MANDALA**  
95% MICRO MODAL / 5% EA  
SUNSET GRADIENT



**MANDALA**  
95% MICRO MODAL / 5% EA  
SEA GRADIENT



LASU 2220



LASU 2220



LASU 2221



LASU 2221



LASU 2222



LASU 2222



LASU 2223



LASU 2223



LASU 2224



LASU 2224



LASU 2225



LASU 2225





LASU  
2230



LASU  
2231



LASU  
2232



LASU  
2233



LASU  
2234







LASU 2235







**LOUNGE**  
**95% ECOVERO / 5% EA**  
**UNBRUCHED SWEAT**



**LASU 2240**



**LASU 2241**



**LASU 2242**



**LASU 2243**



**LASU 2244**



**LASU 2245**







**CROCHET**  
95% ECOVERO VISCOSE/ 5% EA  
TURQUOISE



**CROCHET**  
95% ECOVERO VISCOSE / 5% EA  
PINK



LASU 2250



LASU 2250



LASU 2251



LASU 2251



LASU 2253



LASU 2253



LASU 2252



LASU 2252



LASU 2255



LASU 2255



LASU 2254



LASU 2254





LASU 2260



LASU 2260



LASU 2260



LASU 2261



LASU 2261



LASU 2261



LASU 2262



LASU 2262



LASU 2262



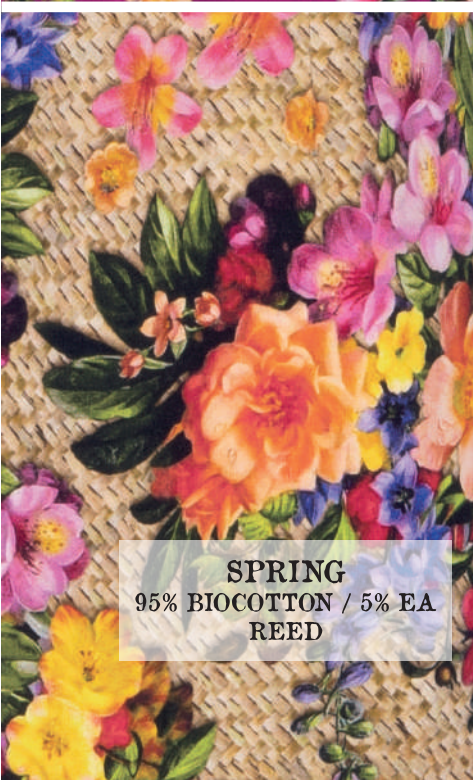




**SPRING**  
95% BIOCOTTON / 5% EA  
GREEN



**SPRING**  
95% BIOCOTTON / 5% EA  
PINK



**SPRING**  
95% BIOCOTTON / 5% EA  
REED

**LASU 2263**



**LASU 2263**



**LASU 2263**



**LASU 2264**



**LASU 2264**



**LASU 2264**



**LASU 2265**



**LASU 2265**



**LASU 2265**



**LASU 2266**



**LASU 2266**



**LASU 2266**







**TROPICAL**  
95% BIOCOTTON / 5% EA



LASU 2270



LASU 2271



LASU 2272



LASU 2273



LASU 2274





LASU 2280



LASU 2280



LASU 2280



LASU 2281



LASU 2281



LASU 2281



LASU 2282



LASU 2282



LASU 2282







**PAISLEY**  
95% BIOCOTTON / 5% EA  
BLUE

LASU 2283



LASU 2284

LASU 2283

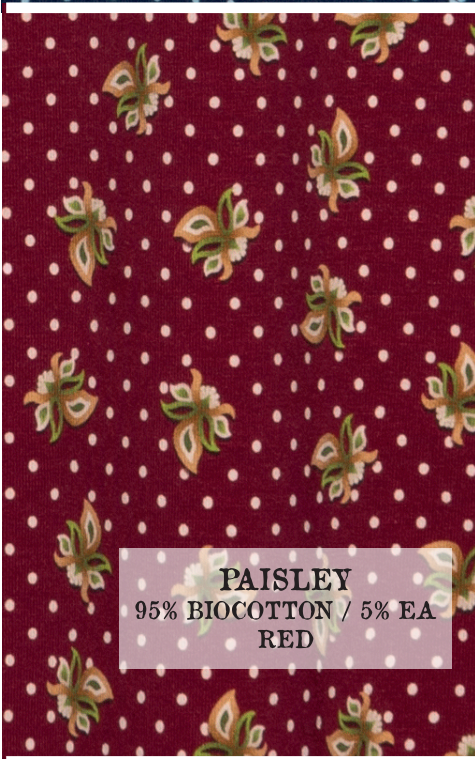


LASU 2284

LASU 2283



LASU 2284



**PAISLEY**  
95% BIOCOTTON / 5% EA  
RED

LASU 2285



LASU 2285

LASU 2285



LASU 2285

LASU 2285



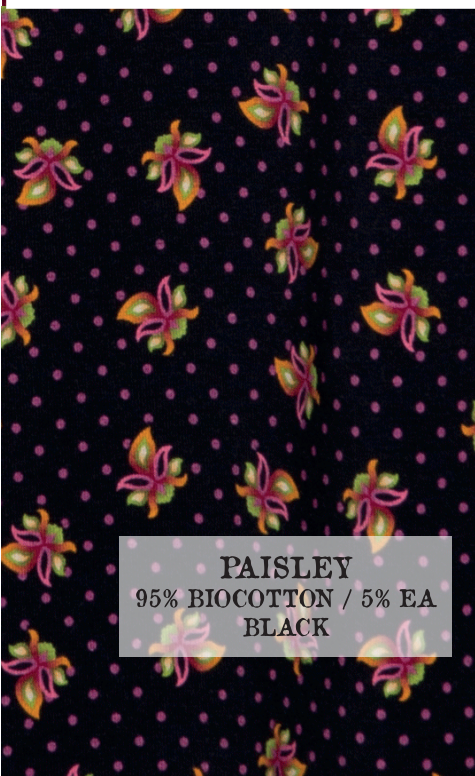
LASU 2286



LASU 2286



LASU 2286

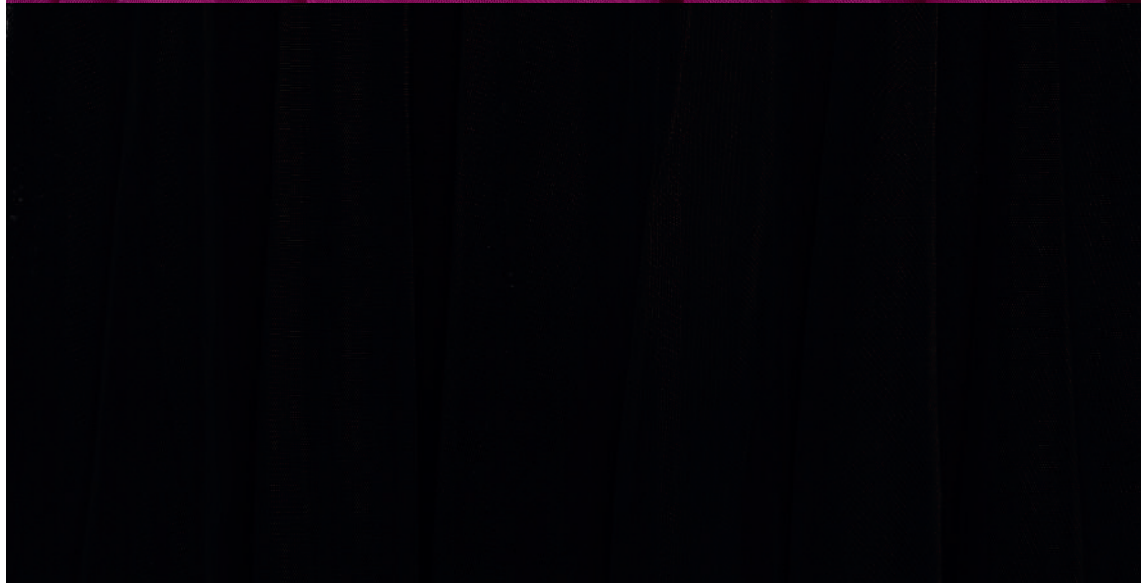
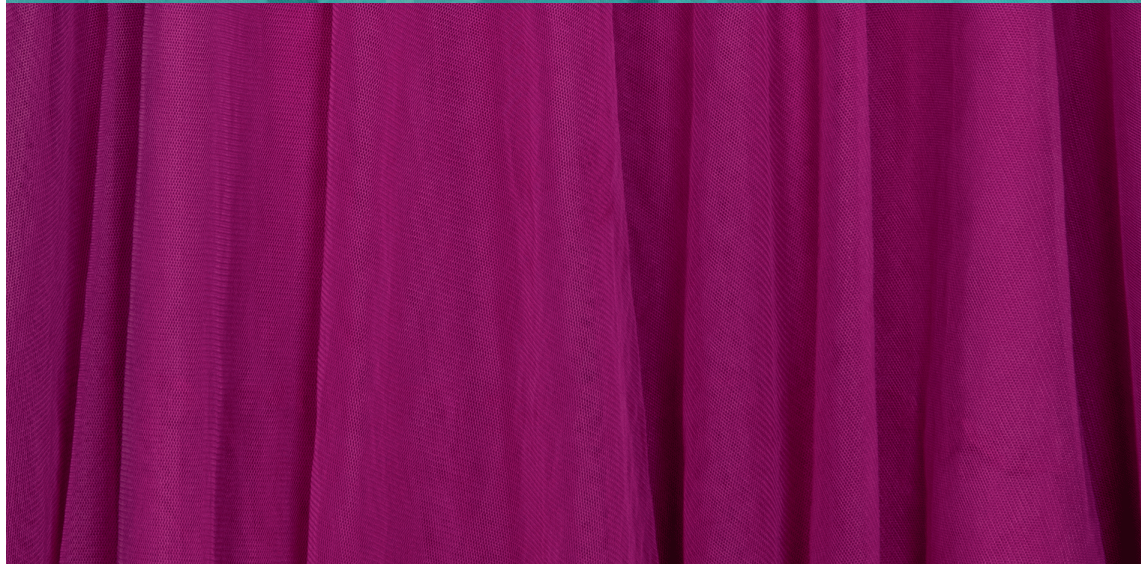


**PAISLEY**  
95% BIOCOTTON / 5% EA  
BLACK





LASU 2200









Thanks to our friends  
and family for our great  
collaboration to create  
this Lalamour lookbook

Designs & styling  
Margit Pronk

Photography  
Grace van Houten

Hair & make-up  
Annieke Martens

Models  
Boogie, Robin, Yentl,  
Shadee & Ophelie

Assistant  
Grandma Nelly

Graphic Designer magazine  
Ela de Haan

Accessoires  
[www.oogkamer.nl](http://www.oogkamer.nl)  
[www.urbanhippies.nl](http://www.urbanhippies.nl)

Boots  
[www.boeties.nl](http://www.boeties.nl)  
[www.clumpys.com](http://www.clumpys.com)

Special thanks to the helpful people  
of Mifune, our nice neighbours of  
the Vagebond, the canvas tent and  
the accidental bypasser with the  
beautiful moped.

[www.lalamour.nl](http://www.lalamour.nl)